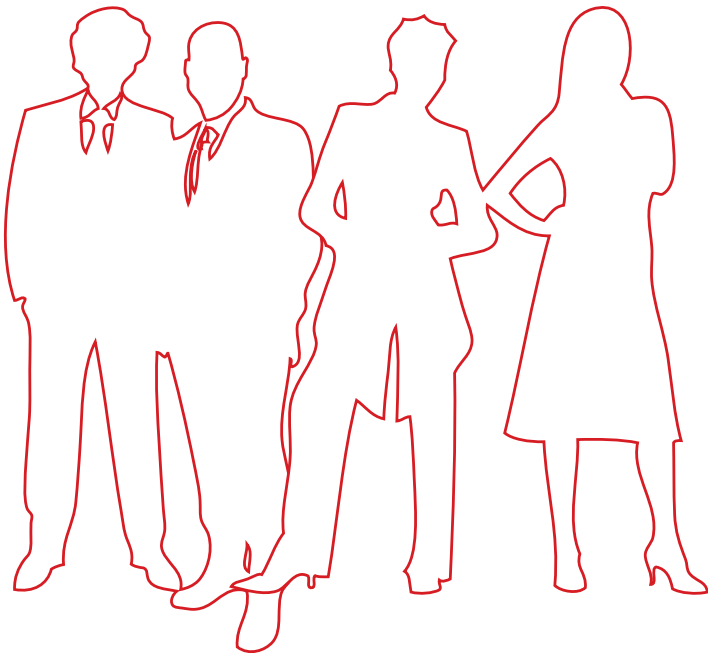


Clients

Many satisfied clients, who have benefited from a tailor-made service, have returned for an encore and appreciate the lasting relationship that has been forged:

Our clients include: Client Service Centre, University of Pretoria
TuksAlumni, University of Pretoria
Research and Innovation Support, University of Pretoria
Faculty of Veterinary Science, University of Pretoria
Faculty of Engineering, Built Environment and Information Technology, University of Pretoria
School of Public Management and Administration, University of Pretoria
Business Enterprises at University of Pretoria
Department of Environmental Affairs
Department of Justice and Constitutional Development
Companies and Intellectual Property Registration Office
Independent Electoral Commission
Retha van der Walt (Independent author)
Special Investigating Unit (SIU)
National Prosecuting Authority
South African Women in Dialogue (SAWID)
South African National Parks



Testimonials

We are particularly impressed by the editorial skills, as well as the project management experience that we received from JSES. It is certainly an advantage that JSES can provide an all-in-one service, which includes both the editing and the layout, which saves time and money. I do not hesitate to recommend making use of the services of JSES.

- Ntsatsi Mantsho

Research Projects Support Officer, Research and Innovation Support, University of Pretoria

JSES performs accurate work of a good quality. Janine Smit has good relationship management skills as our project requires her to work with a range of role-players. There are tight deadlines to be met and this results in tremendous pressure. However, JSES still produces excellent work under trying conditions.

- Wallace Isaacs

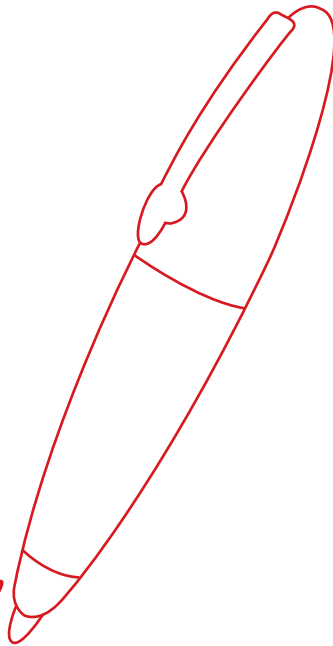
Deputy Director: Student Recruitment and Retention, University of Pretoria

It has been an utmost pleasure to deal with Janine Smit and her team at JSES since I joined the University of Pretoria in 2003. Even before this time, Janine had already made professional inroads regarding the production of numerous print media from start to finish at the University. I have found Janine very reliable and trustworthy. I have no hesitation in recommending JSES for high-quality workmanship, as well as innovative and creative solutions to all challenges and diverse needs that clients are sometimes faced with.

- Linda du Preez

Communication Manager, Faculty of Engineering, Built Environment and Information Technology, University of Pretoria

THANK YOU!



Contact us

For a professional solution to all you publication management needs:

Tel: 012 349 2029
Cell: 083 656 9324
E-mail: info@jses.co.za
Web: www.jses.co.za

Address: 231 Building 8, CSIR Complex, Meiring Naudé Street, Brummeria, Pretoria

GPS: CSIR North Gate (Visitors' reception)
Latitude: -25.747601°
Longitude: 28.275650°

